



DHARMAWARE

GALLERY OF SACRED ARTS



Greetings from Dharmaware!

We opened Dharmaware in New York's West Village in 1976. His Holiness the 16th Karmapa sprinkled rice on our banner in blessing and we were in business. Few people in America had heard the word Dharma, but the Lamas were coming to the West and New York was a doorway.

In 1985 we moved to the peaceful mountains of Woodstock. We were able to focus on improving our product line and expanding mail order service. Frequent visits to Nepal and India made it possible to develop relationships with many extraordinary teachers, particularly H. H. Dilgo Khyentse Rinpoche and Tulku Ugyen Rinpoche. The years have passed and we find ourselves in a new millennium, studying with the next generation of teachers. I'd like to express my gratitude for the generosity of our teachers and the support of the many wonderful friends, employees and customers, who have helped Dharmaware grow.

Our purpose is to provide the growing Dharma community with the highest quality practice supplies. We have developed a network of suppliers, including the finest craftspeople, from the southern coasts of India to the high Himalayas. Home base remains Boudhanath Stupa in Kathmandu, Nepal where we maintain a permanent staff managed by Raja Bajracharya. We find or manufacture traditionally correct and well crafted items, closely supervise the most skilled craftspeople and constantly seek advice and guidance from our lamas.

Fulfilling your needs helps to support small scale family businesses and provides an essential source of income for Tibetan refugees and the craft communities of Nepal, India, Tibet and Bhutan.

May the Dharma continue to flourish for the benefit of all sentient beings.
Many thanks to our lamas and best wishes to all.

Sincerely,

Erik Holmlin

STATUE GALLERY



Manjushri Statue

The Bodhisattva of Wisdom wielding the flaming sword of discriminating wisdom to cut through dualistic thinking. This beautiful statue was cast in copper using the ancient lost wax process by one of the finest Newar craftsmen in Nepal.

Gold plated 5" **\$295**

STATUES

We usually have statues of the following deities in stock: Shakyamuni, Chenrezig, Tara, Manjushri, Vajrasattva, Guru Rinpoche, Medicine Buddha, Maitreya, Milarepa, Bernakchen, Dorje Palmo and Naro Kachöma. Faces can be gold-painted (*as shown above*) or polished copper (*as shown below*). Prices vary depending on size and quality of workmanship.

Call to discuss our inventory: **1 888 679 4900**

or view our current collection on-line:

www.dharmaware.com/statue_gallery



STATUE GALLERY



SHAKYAMUNI BUDDHA STATUE

Hand-carved in exquisite detail by our master woodcarver in Nepal Available in rosewood or teak (*as shown*)

12"\$350 **18"**\$700



GURU RINPOCHE STATUE

Padmasambhava, the father of Tibetan Buddhism, is a source of refuge in the confusion and turmoil of the modern age.

Copper w/ red coral & turquoise
6"\$245 **9"**\$495



Amitayus (*Tib: tse-pa-me*)

The long life deity, bronze 1 ¼"\$24

DZAMBALA STATUES

Dzambala is the bodhisattva of wealth who holds a mongoose spewing jewels. Bronze.

White Dzambala

Riding a dragon 1 ½"\$40

Yellow Dzambala

Seated 1 ½"\$18

Black Dzambala (*not shown*)

Standing 2"\$40



WHITE MAHAKALA

The wrathful manifestation of the bodhisattva of wealth and prosperity. Bronze

2 ¾"\$85

STATUE GALLERY



BHUTANESE CLAY

100-Deity Torma (*lha-tong*)*

A representation of a ritual offering cake from the vision of the 8th Karmapa, Mikyöd Dorje. Base made of clay, top of wood, carved and painted. 9 ½"\$95

Guru Rinpoche Statue

We often have delicately crafted and brightly painted Bhutanese clay statues, please call for availability.

Vajrayogini Tsa-Tsa 3 ¾"\$24



MINIATURE STATUES

Cast in brass in Thailand with fine detail, black finish.

- Shakyamuni** 1 ½"\$8
- Thai Shakyamuni** small 1 ½"\$8
- Thai Shakyamuni** large 2 ½"\$14
- Standing Bodhisattva** 2 ½"\$8
- Standing Kuan Yin** small 2"\$8
- Standing Kuan Yin** large 2 ⅝"\$14
- Cretan Snake Goddess** 1 ¾"\$8
- Seated Kuan Yin** 1 ⅝"\$8
- Tara** small 1 ½"\$8
- Tara** large 2 ⅝"\$14
- Buddha on Naga Throne** (*not shown*) 2 ⅞" ...\$14



STONECAST BUDDHAS

Cast stone powder and resin.

- Amitabha** Japanese style 3 ⅜" \$32
- Shakyamuni Buddha** 3 ⅜" \$24
- Amitabha** Tibetan style 4 ½" \$36



SARNATH BUDDHA

Reproduction of the 2nd C. BC statue of Shakyamuni Buddha teaching the first turning of the Wheel of Dharma at Sarnath. Clay 3 ¾" \$8



STUPAS (*Tib: chö-rten**)

The traditional Buddhist reliquary, the stupa is a mandala which represents the enlightened mind of the Buddha. Hollow to hold relics and blessed articles. Bases included.

- Bhutanese Ceramic Stupa** 6 ½"\$48
- Copper Stupa** 3 ½".....\$65
- with gold highlights (as shown).....\$80
- Silver-plated with gold highlights.....\$85
- Gold-plated.....\$90

Kadampa Stupa

Silver-plated copper 7"\$95

* Product names are often in sanskrit, Tibetan name follows in italics.

PRACTICE SUPPLIES



BUMPA

The bumpa is a ritual vase which represents the palace of the deities. It is used as a vessel of purification, to bestow blessings and to confer empowerments.

White Metal Bumpa

8 ½" high\$36

Bumpa Skirt

With silk embroidery\$32

Bumpa Top Decoration

Peacock feathers and kusha grass\$24



KAPALA

The kapala, representing a "skullcup", is a receptacle for tantric offerings (*men-rak*). Detailed base with skulls, top with double dorje.

Brass Kapalas

Base and top are intricately carved and polished brass with white metal cup.

Small length of cup 1 ⅞"\$15

Medium length of cup 2 ½"\$35

Large length of cup 3 ¼"\$45

OFFERING BOWLS

Placed on the altar to hold the seven outer offerings: drinking and cleansing waters, flowers, incense, light, perfume and food. Polished brass, set of seven:

2 ½" dia\$16

2 ¾" dia\$18

3" dia\$22

3 ½" dia (also available in copper)\$26

DHARMAPALA OFFERING SETS (*ser-kyem*)

Polished brass cup and base plate for making offerings to the dharma protectors.

Small base dia 3 ⅞"\$25

Medium base dia 4 ¾"\$30

Large base dia 5 ⅞"\$36

BUTTER LAMPS

Used as a light offering on the altar, these lamps can hold a votive candle or the traditional rolled cotton wick and clarified butter or oil. Polished Brass.

Small 2" dia x 2 ¾" height \$ 6

Med 2 ⅞" dia x 3 ¼" height \$ 7

Large 2 ¾" dia x 4" height \$12

X Large 3 ¼" dia x 5" height \$15

DZAMBALA OFFERING SETS (*cho-tor*)

Copper tray 9" dia, water pot 5" dia x 3 ½" ht seven plates 3 ¾" dia & brass stand\$58



PRACTICE SUPPLIES



SILVER AND GOLD-PLATED OFFERING SET

Each of these items is intricately carved copper with silver-plating and gold highlights.

Silver-plated Offering Bowls

2 ¾" dia\$58 3 ½" dia\$75

Silver-plated Bumpa

Decorated with the eight auspicious symbols dragon spout & detailed flourishes.

7 ½" height\$108

Silver-plated Long Life Bumpa (tse-bum)

7 ½" height\$108

Silver-plated Dharmapala Offering Set

Size of base plate 6" dia x 6" ht\$75

Silver-plated Butter Lamp

3 ¼" dia x 5" ht\$65

Shal-say Torma (skt: naividya bali)

Representation of a ritual offering cake used as an outer food offering. Wood, hand-carved and painted in Bhutan. 4" ht.....\$36



MANDALA OFFERING SETS

Placed on the shrine as an offering of the entire universe to the awakened ones, the mandala offering is a preliminary practice to accumulate merit in all schools of Tibetan Buddhism.

4 rings 37 offerings (base 7¼" dia) ...\$250

3 rings 28 offerings (base 5½" dia) ...\$125

These sets are silver-plated copper with the auspicious offerings carved deeply into the sides and highlighted with gold. Each set has a base plate, rings and a detailed top piece.

Beaded 3 rings 6" dia (w/out base plate) ...\$45

Beaded 3 rings 5" dia (w/out base plate) ...\$35

Base plate hand-hammered copper or brass
6 ½" dia x 2" ht\$35



Silver-plated Kapala

Small length of cup 2 ½"\$48

Large length of cup 3 ½"\$75

PRACTICE SUPPLIES



BELL AND DORJE

Central to tantric buddhist practice, the bell and dorje represent the feminine principle of wisdom and the masculine principle of compassionate action. Together they symbolize the enlightened mind of the Buddha.

Bell and Dorje Sets

Bells are cast in bronze (i.e. two metals) and handpicked for craftsmanship and tonal quality. The tops of bells, and the dorjes, are intricately carved and polished brass, attached to the bell facing the correct seed syllable.

- Small** 6"\$40
- Standard size** 6 ½"\$50
- XLarge** 8"\$70

*High Quality Bell and Dorje Sets
see Sacred Sound Page #15*

Bell and Dorje Cases

Cotton with felt lining and silk brocade.
Small and standard sizes\$12



PRAYER WHEEL

Prayer wheels are filled with mantra and spun clockwise to send prayers to all the Buddhas and blessings to all sentient beings in the ten directions. Copper and silver with bamboo handle.

- Small** 2 ½ " dia x 8 ½ "\$36
- Medium** 2 ¾" dia x 9"\$48



PHURBA (skt: kilaya)

A phurba is a ritual dagger which serves as a wrathful representation of the compassionate activities of all the Buddhas. The three faces represent the three kayas: the three sides of the "blade" destroy the three poisons.

- Silver-plated copper** 9"\$36
- Copper** 9"\$24
- Iron** 9"\$18
- Iron** 5"\$8

TRI-GUG (skt: khatri)

This hooked knife of the Dakinis represents the power of wisdom to cut through ego-clinging. Silver-plated brass with iron blade 6 ¼" ...\$45

PHURBA STAND

Three-sided wood stand carved with skulls and flames. Phurba is placed in the triangular hole on the top of the stand.

- Small** (fits 5" phurba)
2 ¾" x 3" ht\$40
- Large** (fits 9" phurba)
3 ¾" x 3 ¾" ht\$50

Large size is also available in ceramic.



MANI STONE

Handcarved by Tibetan refugees
Eyes of the Buddha on the obverse

- 2" - 3"**\$10
- 3" - 4"**\$14



MELONG

Tibetan mirror - represents the nature of mind.
Polished brass **2 ¾"** \$9 **3 ⅞"**\$12

KHATTAG

The traditional offering scarf, given in greeting or devotion as a sign of the purity of one's intentions. White, "silk-like" rayon, with the 8 auspicious symbols

- 14 ½" x **6'**\$4
- 18" x **10'**\$10



MALAS

Each mala has 108 beads which are carefully inspected and restrung on white American bead cord with a two piece carved guru bead and red tassel. Lotus seed, crystal and sandalwood malas are used for counting recitation of mantras of the peaceful deities.

Crystal

Unfaceted, brilliantly clear Himalayan quartz. Holes are beveled and polished.

6 mm	\$40
7 mm	\$45
8 mm	\$50
9 mm	\$54

Sandalwood

Smooth and very fragrant.

6 mm.....	\$16
7 mm	\$18
8 mm	\$20
9 mm	\$22
10 mm	\$24
12 mm	\$28

Rosewood

6 mm.....	\$16
7 mm	\$18
8 mm	\$20
9 mm	\$22
10 mm ...	\$24

Bodhiseed

The most versatile mala as it may be used for both peaceful and wrathful deity practice.

11 mm	\$32
10 mm	\$42

Rudraksha

Sacred to Shiva and used by Buddhists for counting recitations of mantras of the wrathful deities. "Chikna", best quality, grown in Indonesia, each of the 5 facets clearly defined.

10 mm	\$45
9 mm	\$55
8 mm	\$80
7 mm	\$125

We carry a complete line of rudraksha products, including single beads with various numbers of faces; please inquire.

Shiva/Shakti Crystal/Rudraksha 10 mm \$40

Lotus Seed

6 mm	\$40
7 mm	\$40
8 mm	\$42
9 mm	\$42

10,000 COUNTERS Silver

Norbu 3/4" (as shown)\$7
Dharmachakra w/coral & tourq 1" .. \$7

BELL AND DORJE COUNTERS

Tightly strung on colorful cord (per pair)
Bell & Dorje silver\$28
Phurba & Trigug silver\$28
Bell & Dorje white metal\$9

MALA BAGS

Silk brocade, 7" dia. shoulder length string.
Red - purple - black - blue - green\$9

WRIST MALAS

Strung on elastic with guru bead in two wrist sizes: 8 mm & 10 mm



Sandalwood, rosewood, lotus seed rudraksha 8 mm & 10 mm \$9



Crystal, rose quartz, carnelian & tiger eye
8mm \$9 10mm \$15
Amethyst 8mm \$22 10mm \$26
Lapis 8mm \$30 10mm \$42

INCENSE AND RITUAL INGREDIENTS



Tibetan Incense

Hand made according to a centuries-old formulation by Dakpa Tamdin in Kalimpong, in accordance with the instructions of H.H. Dudjom Rinpoche. Contains juniper, musk, sandalwood, saffron & many fragrant Himalayan herbs. We buy directly from his family to insure authenticity.

10 ½" (Length) 16 ½"

- Shingham Kuenkhyup**...\$8
- Riwo Sang-chö**\$6
- Gold Label**\$5\$7
- Green Label**\$4\$6



Red Crystal Tibetan Herbal Incense

23 herbal ingredients from the high Himalayan ranges of Kulu, Manali, Sikkim and Tibet. Carefully compounded for health and meditation. Box of 30, 14" sticks \$8

Nepalese Rope Incense

Bundle of 20 - 25, best quality\$2
Clay burner\$1.50



TIBETAN INCENSE BURNERS

These traditional handcrafted Tibetan incense burners have an upper compartment to burn incense on a bed of sand and a storage drawer on the side. Wood, carved in Nepal.

Painted

Front carved with snow lions (*as shown*) or dragons - please specify.

- Small** 4 ¾" x 5" x 13 ½"\$75
- Large** 5 ½" x 6" x 20"\$145

Stained

Front carved with auspicious symbols.

- 4" x 5 ½" x 13"\$95



Bhutanese Incense

Prepared according to the formulation of Pema Karpo and Terdag Lingpa. A blend of more than one hundred precious aromatic and medicinal substances. Made by Nado by appointment to the Bhutanese Crown. (Now packaged in cardboard boxes)

- Best quality** 8 ½" 30 sticks\$12
- Vegetarian blend** 16"
w/out musk & scale of pangolin\$12

Tara Healing Incense

A blend of 33 natural ingredients for reducing stress.

- Packet** of 7" sticks\$3
- Gift Box** of 5 packets ..\$14



INCENSE AND RITUAL INGREDIENTS

Gugul

Fragrant crystalline myrrh, burned to dispel obstructions and negativities. 2 ½ oz \$6

Juniper Herbal Mix

Gathered from the slopes of the high Himalayas in Nepal. Traditionally used as a morning smoke offering for purification and propitiation of the local deities. 2 oz\$4

Riwo Sang-chö Mix

Powdered "mother" mixture of more than thirty ingredients for the mountain smoke offering. 4 oz.....\$8

Aru, Baru and Kyuru

Three of the most important Tibetan medicines. May be added to mandala offerings. Packaged individually by the ounce.....\$3

Triphala Mix

Powdered mixture of aru, baru and kyuru. 2 ½ oz packet\$8

Charcoal

For burning powdered or resin incenses. Packet of ten easy-to-light 1¼" dia discs\$2

Sandalwood

Fragrant pieces 2 oz\$4.50
Powder 2 oz\$4 1 Kg box\$45.00

Pure Camphor

Easy to light crystalline resin burned as an offering. 2 oz 320 cubes\$3.95

Saffron

Traditionally mixed with water and used as a purifying wash or added to enrich offerings. High quality from Kashmir. 1/2 gm pkg ...\$3.50



Sai Baba Nag Champa

Perhaps India's best selling incense. 15 gram box \$1.25 12 boxes\$10



Brass Incense Burners

3" dia 2 ¼" ht \$10
 3" dia 1 ¼" ht, w/ wood base \$8



Copal and Frankincense

Copal is the tree resin sacred to the indigenous cultures throughout Central America. Mixed with frankincense & wrapped in corn husks. 20 1½" dia discs ...\$12 Mini discs\$3

Frankincense

Pure crystalline resin 1 oz packets \$1.25
 1 lb package \$18



Abalone Shell 6" - 7" \$18
White Sage Smudge Stick 4" \$2.50

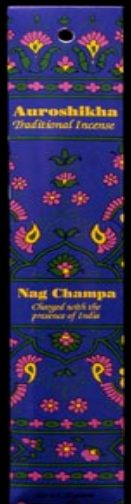


Natural Essential Oil

Incense by Auroshikha Only pure essential oils pressed from flowers or wood are used to make each of these incenses. Lavender, Patchouli or Sandalwood\$2

Natural Nag Champa Incense

Auroshikha revives the ancient art of making incense in the Masala method in which natural essential oils, flowers, spices, aromatic herbs and resins are blended. This is a completely natural form of our favorite flower incense, Nag Champa. 10 grams \$2



See our website for Biotique natural Ayurvedic health care products from India.



PUJA TABLE

This finely crafted handpainted folding table is perfect for holding texts and ritual impliments during practice. Wood, carved in Nepal.

11" x 24" top x 12" hieght\$295
Larger sizes may be special ordered.

PUJA CLOTH (as shown)

Fits puja table. Silk brocade, red with blue border. 11" x 24"\$20

PECHA FOLDERS (as shown)

To protect Dharma texts. Silk brocade, bamboo frame, hand made brass rivots.

- Small** 11 ½" x 4"\$36
- Medium** 14 ½" x 4 ½"\$40
- Large** 17" x 5"\$42

PECHE COVERS

Used to wrap dharma texts; gold cotton with red silk corner. 22" x 22" ...\$7 33" x 33" ...\$8

SILK BROCADE

Silk brocades are backed with cotton and hemmed. They are available in lengths of 15" or 24" Other lengths may be special ordered. *Photo reads left to right.*

- Eight auspicious symbols on red** handloomed in Varanasi 27" wide\$30\$50
- Gold dragons on black (or blue)** handloomed in Varanasi 27" wide\$30\$50
- Gold mandalas on blue** Chinese 28" wide\$25\$40
- Dragon circles on red (or purple)** Chinese 28" wide\$25\$40



BROCADE THANGKA

Shakyamuni Buddha (as shown), **Green Tara** or **Guru Rinpoche** framed with silk brocade.

Size of brocade image: 8" x 9 ½"
 Size of silk brocade frame: 17" x 25"\$45



MAHAKALA WALL HANGING

Silk brocade, handloomed in Varanasi, India. 34" x 45"\$195



THANGKA GALLERY



Shakyamuni



Vajrasattva YabYum



Medicine Buddha



Green Tara



White Tara



Kalachakra



Dorje Phurba



Singhamukha of 5 Families

THANGKAS

Tibetan iconographic paintings used as visual support for meditation practice. Our thangkas are painted by master artists in Nepal according to traditional specifications. A selection of the major deities may be viewed in our Woodstock gallery or online.

We accept special requests for any thangka for which you can provide a description or photo.

Prices start at \$225 and vary with size and intricacy.

ORDERS 1 888 679 4900

SACRED SOUND



DAMARU

A small double-sided drum which is used with the bell and dorje to invoke the wisdom deities. It may also be used as a sound offering. Hand-carved wood with silk brocade handstrap and crocheted beater. Tail is made with five colors of best quality silk brocade. Cotton carrying case has embroidered bliss swirls (*ga-khyil*) and felt lining.

Damaru Set with Case and Tail

Small 4" x 4 1/2"\$62

Available Separately:

Damaru\$24

Tail\$24

Case*\$15

* Please send measurements of your drum, both diameter & width.



CHÖD DRUMS

Integral to the chöd ritual practiced by all lineages, the beat of the chöd drum is the unborn sound of emptiness and has the power to awaken us from ignorance. Handcrafted by Ngagpa Jigme in Nepal, these drums contain mantra of the major chöd lineages and are adorned with a silk brocade handstrap with skull piece, cowrie shells and crocheted beaters. The tail is made with five colors of best quality silk brocade. The case is constructed of durable cotton with red flannel lining, embroidered bliss swirls (*ga-khyil*) and carrying strap. Drum prices include case and tail.

Small 7 1/2" - 8" dia\$140

Large 8 1/2" - 9 1/4" dia

..... \$ 1 6 0

Xlarge 9 1/2" - 11" dia\$200

Case and tail available separately:

Tail\$30

Case*

.....\$32

*Please send measurements of your drum, both diameter & width.

SACRED SOUND



HIGH QUALITY BELL AND DORJE SETS

Each bell is cast from its own clay mold, replicating the design of the set presented by the Emperor of China to the 10th Karmapa.

- Small** 6 ¼"\$225
- Standard** 7"\$250

HIMALAYAN SINGING BOWLS

Hand hammered from a special "bell" alloy that "sings" when rubbed around the sides. Excellent as a meditation gong. Each bowl comes with a leather covered wooden striker and a velvet covered kusha grass ring.

- 5" - 5½"**\$45 **5 ⅝" - 6"**\$50
- 6" - 7"**\$70 **7" - 8"**\$80
- 8" - 9"**\$120 **9" - 10"**\$165
- 10" - 11"**\$240 **11" - 12"**\$300

Leather Covered Wood Strikers

- Sm\$12 Med\$15 Lg\$20



TING-SHA

Carefully selected for tonal quality, these Tibetan cymbals may be used as a sound offering or as a meditation aid. Bronze.

- | | | | |
|---------------------------------------|-----------|-------------|------|
| | 3" | 2 ½" | |
| Plain (as shown) | \$28 | | \$24 |
| Embossed w/ dragons | \$28 | | \$24 |
| Eight Auspicious Symbols | \$28 | | \$24 |
| Om Mani Padme Hung | \$28 | | \$24 |



CONCH

6" - 7" long, blows easily, prices vary with size and quality - please call for availability.

We often have other musical instruments, including Nepalese shaman's drums and Madals.



SILVER JEWELRY



Small Deity Pendants 1"\$12
Shakyamuni, Guru Rinpoche, Chenrezig, Tara
Manjushri, Akashyogini, Ganesh, Bhairab

Large Deity Pendants 1½"\$20
Shakyamuni, Guru Rinpoche, Chenrezig, Tara
Manjushri, Ganesh



Eternal Knot Pin 1"\$12
Prayer Wheel Earrings ⅝"\$15/pr
Prayer Wheel Pendant
Filled with prayers, spins easily 1½"\$18



GAOS
Locketts to securely hold blessed articles
& relics. (read left to right)

Double Dorje Gao ⅞" \$24
1 ⅛" (not shown)\$28

Double Dorje Gao (top)
Red coral or turquoise with Kalachakra on
reverse 1 ¼"\$28

Double Dorje Gao (bottom)
w/ Hung on reverse 1 ¼"\$28

Cloud Gao with Kalachakra monogram
1 ⅝" dia\$40 1 ⅞" dia\$50

Kalachakra Gao
Copper back, silver front 1 ⅝" ht\$35



Double Dorje Pendants
With red coral, lapis or turquoise.
1 ¼" \$28 2"\$45

Double Dorje Pendant
With red coral & turquoise
pieces 1" \$22

Dorje Trigug Pendant
With red coral & turquoise
pieces 1" \$22

Double Dorje Pendant
With red coral & turquoise
pieces 1 ⅞" \$28



Dorje 1"\$10
Bell 1"\$10
Trigug 1"\$10
Phurba 1 ¼"\$10

Above are available as either pendants or earrings

Dragon Pin 2"\$12



Dolphin Pin 1 ⅝"\$15



Snake Ring adjustable 1 ½" ...\$24



All jewelry is sterling silver.

SILVER JEWELRY

ཨོཾ་མ་ཎི་པདྨེ་ཧཱུྃ། ། ཨོཾ་མ་ཎི་པདྨེ་ཧཱུྃ། ། ཨོཾ་མ་ཎི་པདྨེ་ཧཱུྃ། །



OM MANI PADME HUNG BRACELETS

- Small** 3/8"\$20
- Medium** 1/2"\$25
- Large** 5/8" (as shown)\$45
- Extra Large** 3/4"\$65

Open band, expandable. Gold-plated letters, add \$5

OM MANI PADME HUNG RINGS

- Small** 3/8" (as shown) ...\$12
- Large** 1/2" ...\$14

Open band, expandable. Gold-plated letters, add \$2

OM NAMAH SHIVAYA BRACELET (not shown)

- Small** 3/8" \$20 gold-plated letters \$25

TIBETAN BRACELETS

Available in combinations of Tibetan turquoise red coral and lapis lazuli. Call to discuss stock.

- 1/6" width\$50
- 5/8" width\$95
- 3/4" width\$145



CLOISSONÉ ENAMELED PINS

(read clockwise)

Endless Knot, Double Dorje, Tibetan Flag, Karmapa's Dream Flag, Kalachakra Monogram, Dharma Chakra, Om (gold on orange, white or black backgrounds)

Pins are cloisonné enameled brass 7/8" ... \$5



SUN OR SUN/MOON PENDANTS

- Small** 7/8" dia.....\$9
- Medium** 1 1/4" dia\$15
- Large** 1 3/8" dia\$22
- Xlg** 2 1/4" dia\$28



Om Pendants

- 3/4"\$8
- 1"\$12
- 1 1/2" \$18



Om Earrings

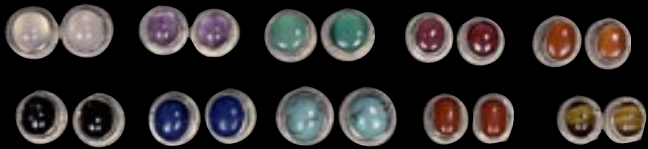
- 3/4"..... \$15/pr



SILVER POST EARRINGS

(clockwise) Moonstone - Amethyst - Green Onyx - Garnet - Carnelian Tiger Eye - Coral - Turquoise - Lapis - Black Star 3/8"\$15/pr

All jewelry, except enamel pins, is sterling silver.



DHARMAWEAR



WARM WOOL FLANNEL

Tightly woven wool with black cotton flannel lining. Detailed with traditional handwoven Tibetan fabrics by our tailors in Kathmandu.

- Tibetan Long Vest**\$75
 - Tibetan Jacket** Sleeves of current model are solid black with detailed cuffs\$95
 - Waistcoat Vest**\$40
- S M L XL XXL**

MEDITATION SHAWLS (zen)

- Wool** maroon 5' x 9'\$75
 - Raw Silk** maroon 46" x 8'\$85
- Nagpa zens in red & white raw silk or cotton are also available - please inquire.

TIBETAN SHIRTS

100% cotton flannel double breasted shirt with brass lotus buttons
 maroon - red - purple - royal - teal - navy - black - orange - white
color availability varies - please call or email

S M L XL XXL \$35





LUNGI (sarong)

Best quality rayon with woven border and rolled edges.
 white - saffron - orange - red - brown - blue - purple - black
 43" x 80"\$18

SCARF

Rayon with multicolored metallic threads.
 black - indigo - sky blue - purple - lavender
 forest green - leaf green - taupe - gold - red
 fuchsia - cream - white 33" x 62"\$9

HINDU PRAYER SHAWLS

A wide variety of deity prints and mantras
 on best quality rayon. Call to discuss colors
 and prints available. 44" x 78"
 \$ 1 8



INDIAN RAW SILK

Men's long sleeve dress shirt with single pocket.
 100% hand-loomed silk red - orange - taupe
 wine - blue - teal - purple - black - ivory
Shirt 38 - 40 - 42 - 44 - 46\$45
Shawl 45" x 96" \$65



SUMMER BLOUSES FROM INDIA

Short sleeve white cotton\$24
 Short sleeve ivory rayon\$24
 Sleeveless white cotton\$20

S M L

ANTIQUÉ BRONZES



Ganesh

Tanjur Tamil Nadu 18th Century

Many other antique bronzes are available at our Gallery of Sacred Arts in Woodstock. Vishnu - Shri Devi - Bhru Devi - Rama - Hanuman Balakrishna - Shiva Nataraj - Durga - Nandi. You may also view our selection online at: www.dharmaware.com/southindianbronzes



Shiva Nataraj

Tamil Nadu Early 20th Century
Shiva in his form as Lord of the Dance



Bronze Puja Items

New and old, one of a kind puja items, such as arati lamps, conch stands, bells, etc. are available. Please call to discuss current inventory: **1 888 679 4900**



SHIVA LINGAM

In Sanskrit the name of these sacred rocks is *Narmadeshwara*, "Lord of the Narmada", the river in central India which shapes them. The lingam represents the primordial creative principle ceaselessly manifesting from the great emptiness. Sizes from 1 inch to 1 meter are available. Prices begin at \$5 and depend on size and markings.



YONI LINGAMS

India's primal symbol for the union of Shiva and Shakti. Carved black marble and, occasionally, white marble. Call for availability.



HINDU DEITY STATUES

Hand-painted on Ganges clay.

Shiva Shankar 5 ½"\$32
Saraswati standing with Vina 5 ½"\$30
Ganesh 4"\$30
Shiva and Parvati 6"\$25
Hanuman 8"\$45
Hanuman 4" (not shown)\$28
Radha Krishna 6"\$28
Krishna 6" (not shown)\$36
Shirdi Sai Baba 4"\$28
Kali 6"\$34
Durga 8 ½"\$45
Kali standing on Shiva 7"\$34
Kali standing on Shiva, 2 pcs 11"\$65
Buddha 4 ½" (not shown)\$24
Tara 5 ¾" (not shown)\$30
Laxmi 6 ¾" (not shown)\$34
Reclining Vishnu (not shown)\$42
Kali standing 4"\$12
Hanuman 3"\$9
Laxmi 2 ¼"\$8
Shiva 2 ½"\$7
Ganesh standing 2 ½"\$7



PILGRIM'S COLORING BOOKS

Text & Illustrations by Tania Sironic
Ganesh Goes - Shakti/Durga/Kali - Thangka Mandalas - Yantras - Surya the Sun
 18 pgs 10" x 13" (shrink wrapped)\$8

HINDU POSTERS

Paper, assorted deities 12" x 17"\$3



MINIATURE STATUES

Cast in Thailand in fine detail, brass w/ black finish
Shiva 1 ⅛" \$8 gold plated \$24
Vishnu 1 ¼" \$8 silver plated ... \$18
Ganesh 1 ⅛" \$8 gold plated \$24

RITUAL IMPLEMENTS

Trisul brass trident with base 6" ..\$4 8" ..\$7
Arati Bell 5" brass with Garuda handle ...\$8
Arati Lamp 6 ½" (length) brass\$10

RITUAL INGREDIENTS

Vibhuti Sacred ash from Varanasi 30 gm ...\$3
Saffron High quality from Kashmir ½ gm..\$3.50
Camphor Easy to light, crystalline resin
 60gm 320cubes.....\$3.95

Sandalwood Powder

from Mysore 2 oz\$4.50 1kg box\$45

Ganga Pani

½ pint Ganga water sealed in copper urn ... \$8

Kum Kum/Sindhur Powder

25gm red or orange ...\$2 50gm red ...\$5

Kashi Ashtagandha Chandan

Ball of scented sandalwood paste for marking forehead. 50 gm \$4

Natural Nag Champa Incense

Made by Auroshika in the ancient Masala method in which the natural essential oils and the crushed nag champa flowers are blended 10 gm packet \$2

Sai Baba Nag Champa

Perhaps India's best selling incense.
 15 gm box\$1.25 40 gm box\$2.50

Teach Yourself Hindi

Book by Mohini Rao w/ 2 Audio Cassettes \$20

India Road Map

Discover India series - very detailed 27" x 40" \$10

Kings with Straw Mats Video

Pilgrimage to 1989 Khumb Mela by filmmaker and poet Ira Cohen. 70 minutes \$30



AH Bhagavan Das

Enhanced 30th Anniversary 2CD edition of Bhagavan Das's classic 1972 album 87 mins. of chanting plus vintage photos and video message from 2002.....\$22



MASKS

(read clockwise from the bottom)

Mahakala clay Bhutan 3 ½" x 4"\$24

Bhairab cotton maché Nepal 6 ½" x 6"\$25

Tara cotton maché Nepal 13" x 16"\$85
 black and white (as shown) or yellow
 7" x 9 ½"\$30



DOOR HANGING

The eight auspicious symbols (tashi tag -gyay) printed on cotton w/multi-colored ruffles 37" x 78"

Blue on white lightweight cotton\$24

Red on yellow cotton (as shown)\$35

Tashi Tag-gyay Wall Plaque

The eight auspicious symbols. Wood, painted in Nepal with bright enamels. 9" x 16"\$54

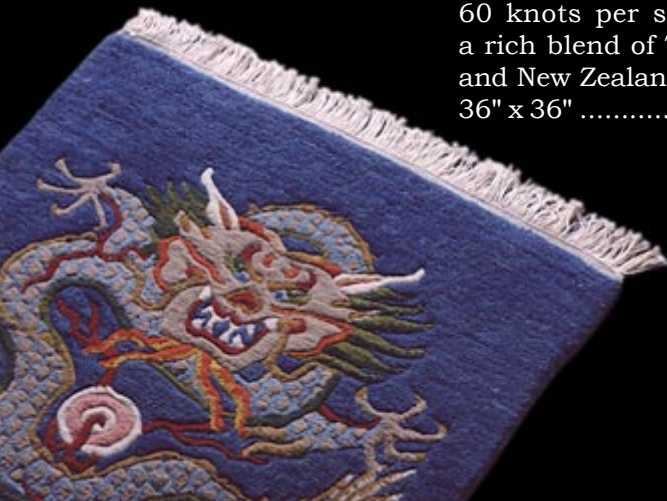


TIBETAN CARPETS

Handwoven in Nepal using the traditional "Tibetan knot." 100 knot per square inch carpets are woven of luxurious Tibetan wools which have high lanolin content because of the high altitude. 60 and 80 knot carpets are woven from a mix of Tibetan and New Zealand wools. We offer a wide variety of classic designs. Please view our selection online: www.dharmaware.com

Dragon Carpet

60 knots per sq. inch
 a rich blend of Tibetan
 and New Zealand wools
 36" x 36"\$225



Tiger Carpets

100 knots per sq. inch
 100% Tibetan wool
 8" x 60"\$250
 3' x 6'\$425
 4' x 6.5'\$700



ACCESSORIES

PRAYER BANNERS

These colorful banners, when hung outside, bestow blessings on the environment, sending prayers on the wind for the benefit of all sentient beings. Woodblock prints on cotton, each flag portrays a deity or auspicious symbols and mantra. Set of the five primary colors. Guru Rinpoche, White Tara or Wind Horse (*lung-ta*)
Set of five 8 foot banners **\$45**



PRAYER FLAGS

Each set contains five 13 1/2" x 18 1/2" flags in the 5 primary colors. Please specify: Guru Rinpoche, White Tara, Wind Horse or Amitayus
1 set unstrung **\$7**
1 set strung on 18 ft. of five color cord **\$10**
3 sets of five Guru Rinpoche, White Tara and Wind Horse strung on 30 ft. of cord **\$20**
5 sets of five 2 Guru Rinpoche, 2 White Tara and 1 Wind Horse strung on 42 ft. of cord **\$35**



TIBETAN FLAG

Poly/cotton applique 36" x 48" .. **\$54**

YOGA MAT

"sticky mat"

Amethyst 24" x 72" **\$28**



ZAFUS AND ZABUTONS

Traditional Japanese sitting cushions.

Zafu Cotton/poly cover with carrying handle, firmly stuffed with kapok and available in black, maroon, red, orange, purple, blue, green 14" x 9" **\$50**

Zabuton Cotton/poly cover over cotton batting in same colors as zafus 31" x 26" x 4" **\$80**

SEIZA BENCH

An excellent meditation aid for anyone who experiences knee or lower back pain when sitting for extended periods of time. Handmade of beautiful oak.

Regular 18" x 6 1/2" x height 8" back 7" front **\$40**

Folding legs 18" x 7" x height 8" back 7" front **\$48**

SEIFU

The world's first fully adjustable meditation cushion, which combines the benefits of the Seiza Bench and the Zafu. It's two internal compression straps make it adjustable from 3" to 15".

Available in black, red or violet cotton twill **\$95**





DHARMAWARE

GALLERY OF SACRED ARTS

54E Tinker Street Woodstock NY 12498

orders@dharmaware.com

www.dharmaware.com

USA 1 888 679 4900

1 845 679 4900



This catalog contains Dharma photos - please dispose of by burning or recycling.
Photography and design by Gary Abatelli - Photography in Nepal by Rajbhai Suwal
Graphic Design by Mandala Graphics/Kathmandu Nepal
Graphitti/Shokan NY - Marc Jargow/Woodstock NY

